

IMAGE





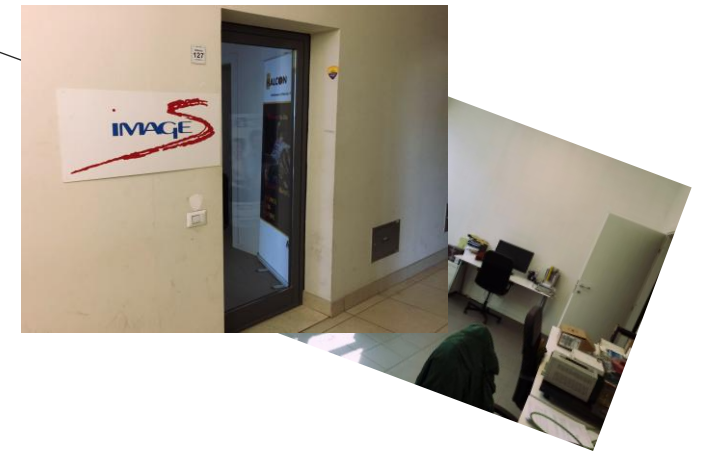
Headquarters
Mariano Comense (CO)



Regional office
Firenze



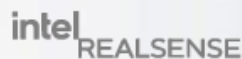
Regional office
Jesi (AN)



Home Office
Frascati (RM)



iMAGE S



ITALY : 1.200 local grapes, France : 222



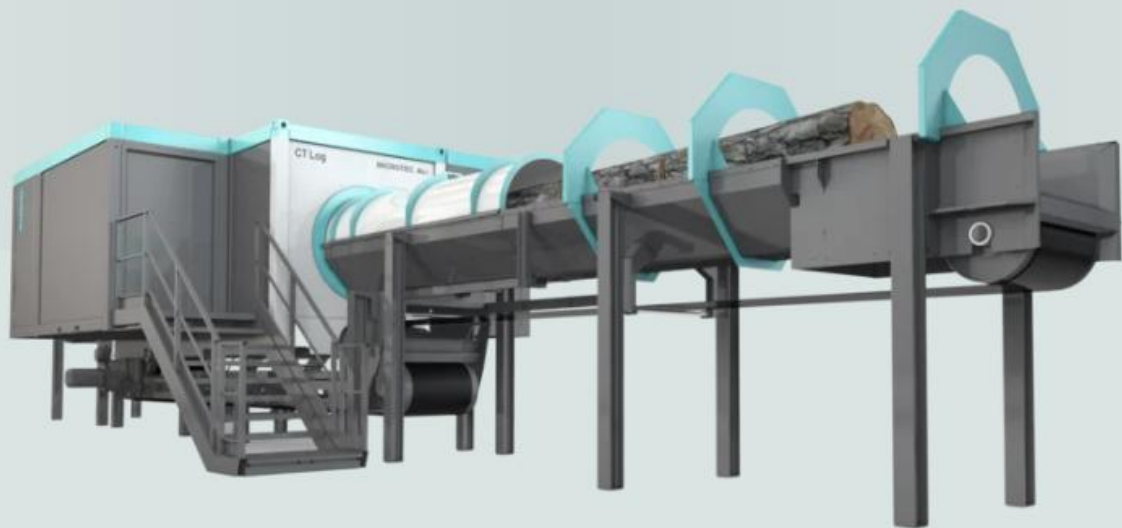
ITALY : 140 wheats – USA : 6



ITALY : 533 olive cultivars – Spain : 70



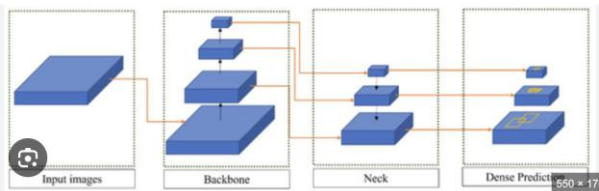
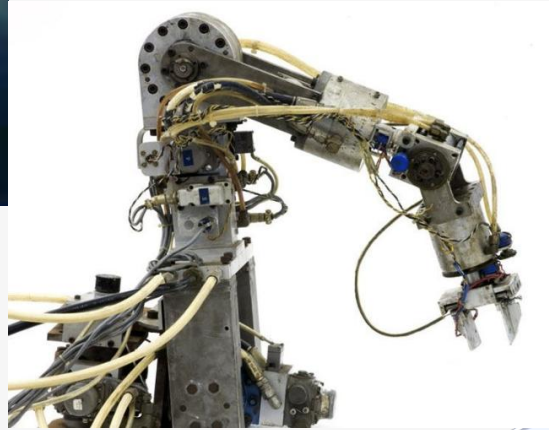
ITALY



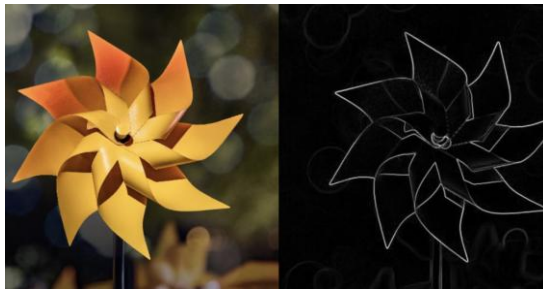
ITALY



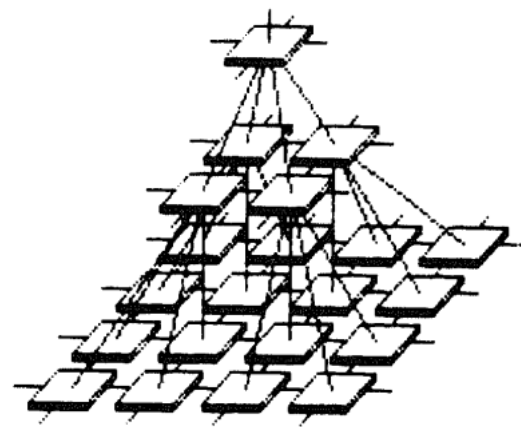
MACHINE VISION or IMAGING



late 40's



60's

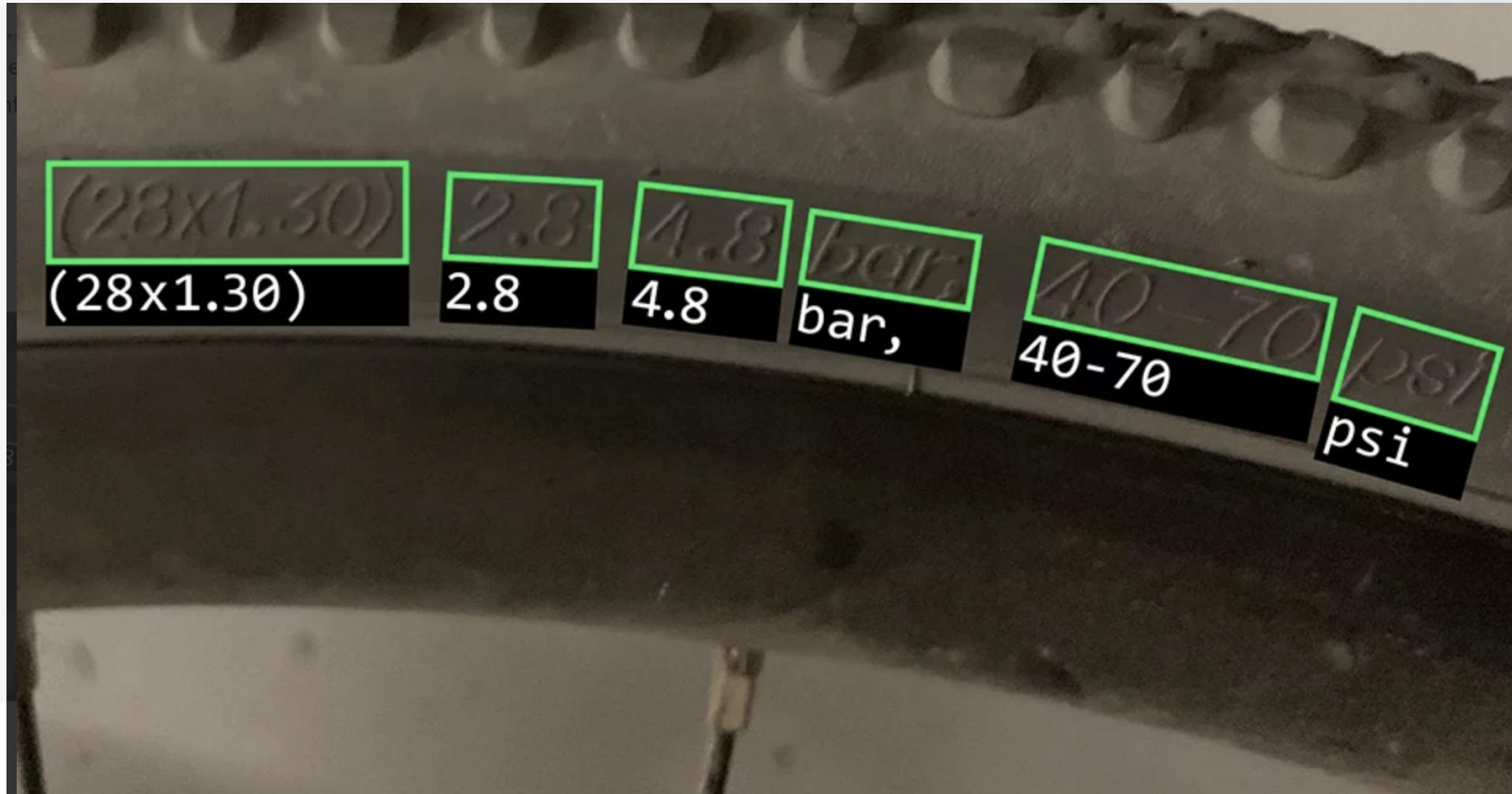


70's

80's

90's

AI and Machine Vision



AI and Machine Vision

The screenshot displays the HALCON HDevelop environment running a deep learning OCR application. The main program window shows the following code:

```
120 * Detect and recognize the words.  
121 apply_deep_ocr (ImagePart, DeepOcrHandle, 'auto', DeepOc  
122 *  
123 *  
124 * Visualize the results on the original image.  
125 * The detections are shown as oriented rectangles, where  
126 * The recognized words are shown at a corner of the dete  
127 * please see also the documentation of the procedure "de  
128 dev_display_deep_ocr_results (ImagePart, WindowHandle, D  
129 get_dict_tuple (DeepOcrResult, 'words', OcrResult) 2.085 ms
```

The graphical windows show the following steps:

- Finestra grafica: [H205D1706920]**: Original image with a label "81153PM" highlighted by a green bounding box.
- Finestra grafica: [H205D1706800]**: Original image with a yellow bounding box around the label.
- Finestra grafica: [H205D1706CB0]**: Rotated image with the label "43375NR" highlighted by a green bounding box.
- Finestra grafica: [H205D1706E60]**: Original image with a yellow bounding box around the label.

The Variable Window shows the results of the OCR process:

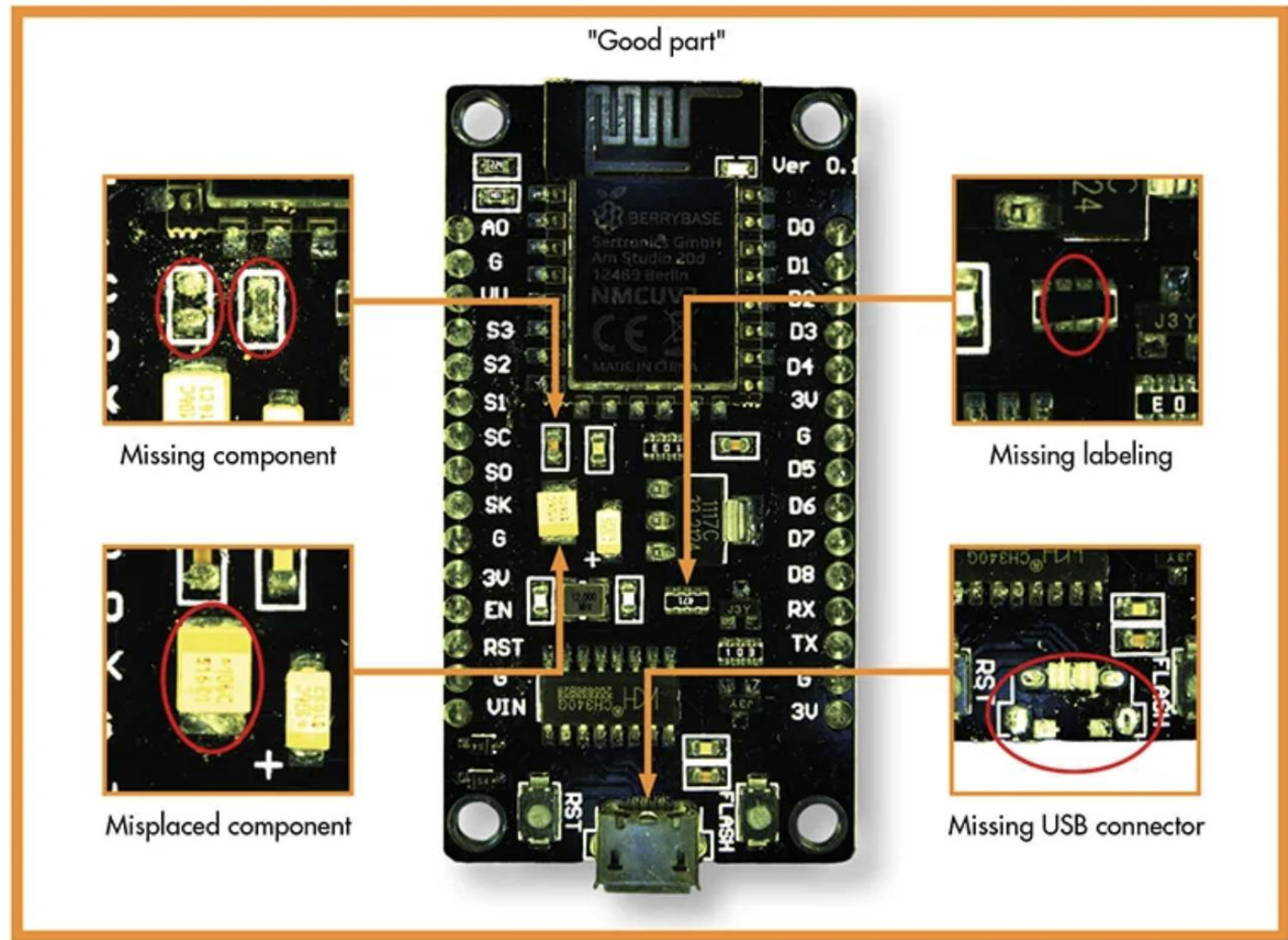
Variable	Value
DeepOcrResult	H205D17068C0 (dict)
OcrResult	H205D1706710 (dict)
Words	'43375NR'

The bottom status bar shows the image dimensions: [0] Image (#=1: 3008x3008x1x1byte).

AI and Machine Vision

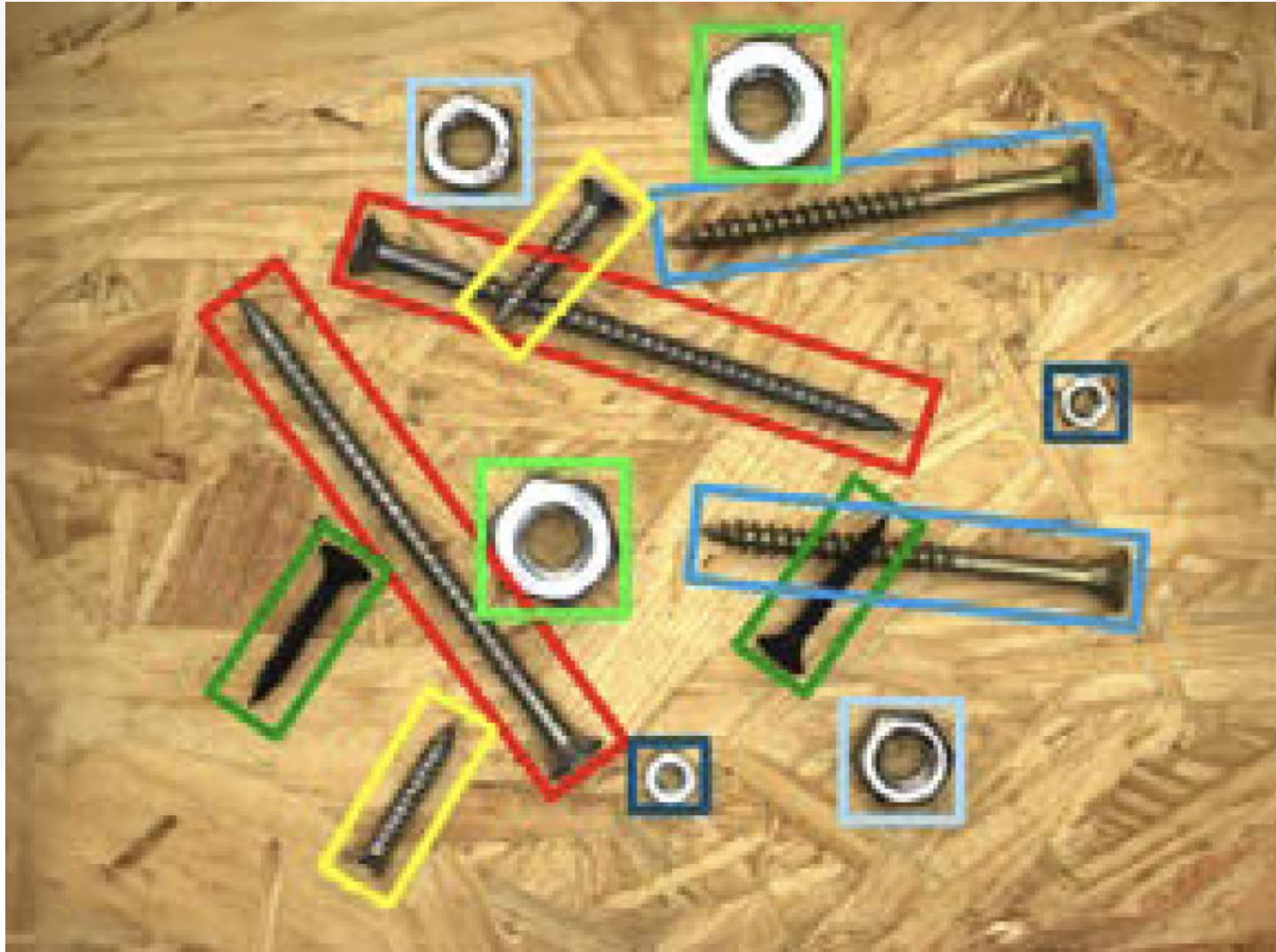


Local Anomalies



Global Anomalies

AI and Machine Vision



AI and Machine Vision



GRAZIE!